



The Montessori School
KINGSLEY



Welcome

**2022
Annual General Meeting**

We acknowledge the Traditional Owners of the land on which our school stands:
the Whadjuk people and their elders; past, present, and emerging.



Introduction to Board



- Angela Chew (Chair)
- Melinda Shreeve (Secretary)
- Hannah Zhang (Treasurer)
- Celine Royet
- Tash Tourabaly
- Jarrod Burns
- Alex Zavros
- Laila Miller
- Mahesh Advani
- Des Reuben (Principal)

Agenda



- Confirmation of 2021 minutes
- 2021 Annual Report
- Principal's Report
- Board Report
- Treasurer's report
- Auditor appointment
- Election of Board Directors
- General Business



The Montessori School
KINGSLEY



- Confirmation 2021 AGM minutes
- 2021 Annual Report



The Montessori School
KINGSLEY



Principal's Report

Presented by Des Reuben



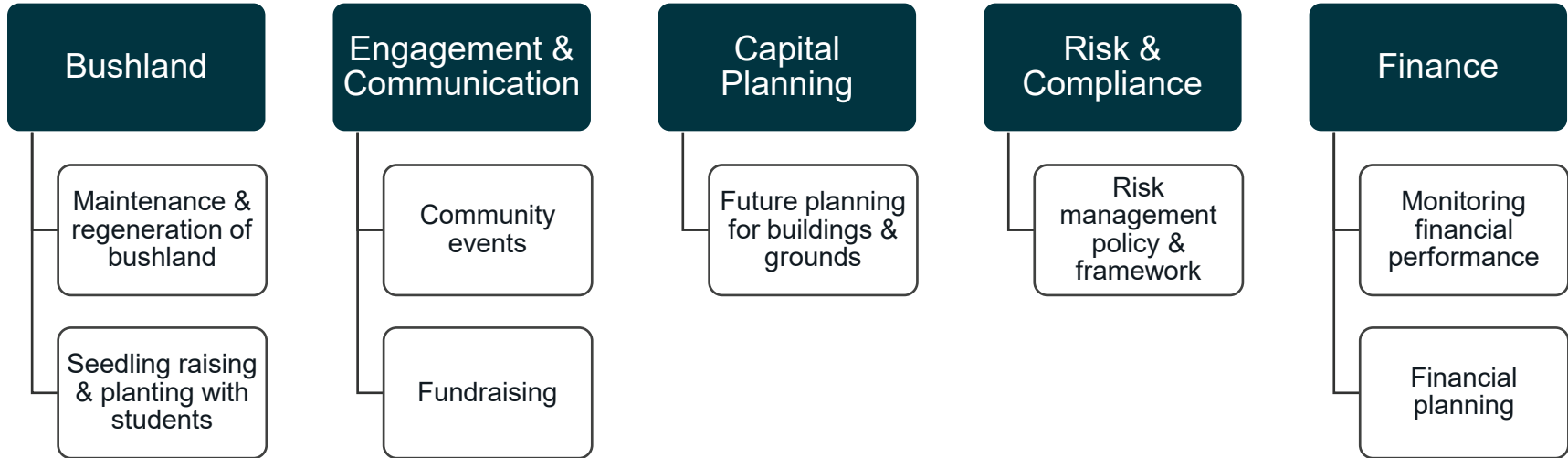
The Montessori School
KINGSLEY



Board Report

Presented by Angela Chew

Board sub-committees 2021



Strategic Planning Day 2021 – Board Directors & Principal



Our Vision & Values

This document attempts to define The Montessori School Kingsley's ethos by identifying our core values, stating our mission, purpose and vision. It is for the school community, its Board and the public.



The Montessori School
KINGSLEY

Vision & Values Workshop 2021





Our Vision

The Montessori School Kingsley was founded by Mrs W M Duyker de Vries in 1962, a student of Dr Maria Montessori, and is the longest running Montessori School in Western Australia.

Our vision is that our school continues to lead the way in the evolution of the Montessori Method in modern society, and strives to further demonstrate our learning environment is ideal for children.

We believe Montessori as an educational experience will further the improvement of life on our planet by respecting the human potential of every child through an education that provides for the child's needs and tendencies.

A group of children, mostly wearing dark green bucket hats, are gathered outdoors near a body of water. They are looking towards the right side of the frame. The background features tall reeds in the foreground, a calm blue lake, and a line of green trees under a clear blue sky. The scene is brightly lit, suggesting a sunny day.

Our Mission

To treat every child as an individual and nurture every aspect of their development, providing the guidance, inspiring the curiosity and nurturing the knowledge, resilience and love of learning they need to thrive today and into the future.



The Montessori School
KINGSLEY



Vision, Mission & Values

Codes of Conduct



The Montessori School
KINGSLEY

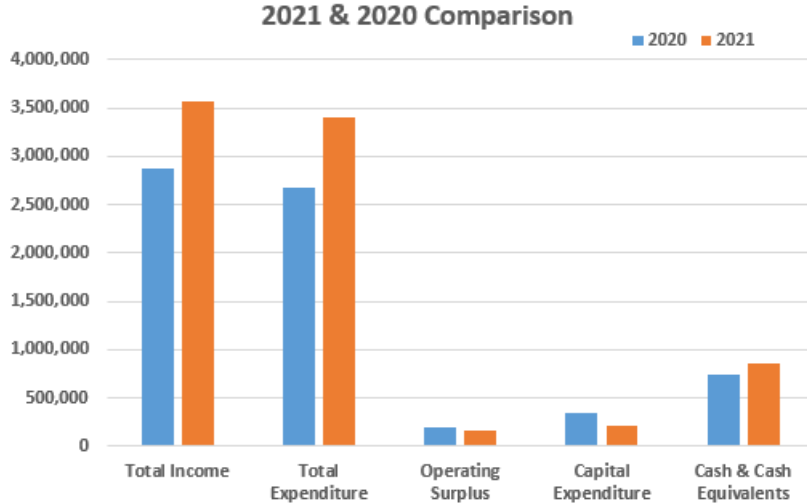
Treasurer's Report

Presented by Hannah Zhang

2021 audited accounts

2022 budget

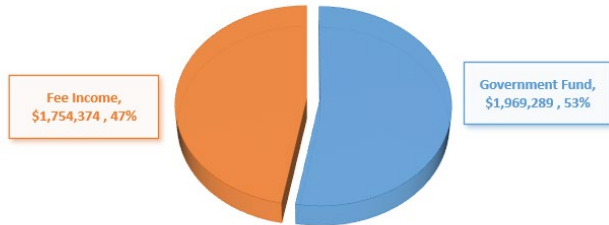
2021 Highlights



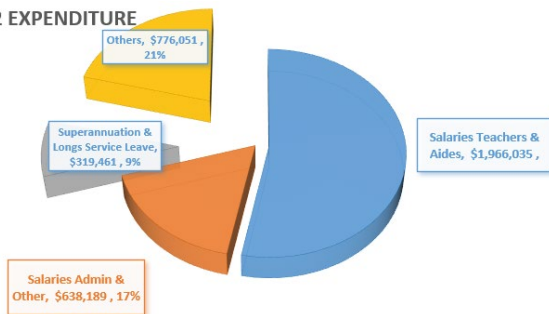
- Enrolment increased from 186 to 203
- Total income increased 25%
- Total expenditures increased 27%
- Operating surplus \$170,483
- \$219,170 capital expenditure
- \$900,000 capital grants for the Shamai building

Treasurer's Report: 2022 Budget Highlights

2022 INCOME



2022 EXPENDITURE



	2022 Budget	2021 Actual	Change
Enrolment Number	201(Feb. census)+11	195	3%
Government Fund	\$1,969,289	\$ 1,905,086	3%
Fee Income	\$1,754,374	\$ 1,657,695	6%
Capital Expenditure (not include Shamai Building)	\$136,500	\$219,170	38%
Capital Expenditure (New Shamai Building)	\$3,802,210		
Total Operating Expenditure	\$3,699,736	\$3,404,783	9%





2021 Appointment of Auditor

Nominee:

ANDERSON MUNRO & WYLLIE

Registered Company Auditor

Director Nominations

Director Nominations:

- Angela Chew - renominating
- Jarrod Burns – renominating
- Ruth Tay





The Montessori School
KINGSLEY



General Business

**2022
Annual General Meeting**



The Montessori School
KINGSLEY



*Thank you &
Goodnight*

**2022
Annual General Meeting
Closed**