



Welcome

2024 Annual General Meeting



The Montessori School
KINGSLEY

We acknowledge the Traditional Owners of the land on which our school stands:
the Whadjuk people of the Noongar Nation and their elders, past and present.



Photo courtesy of Engagement & Communication sub-committee



The Montessori School
KINGSLEY



Board Directors

Angela Chew (Chair)

Jarrold Burns

Chloe Bond (Secretary)

Alex Zavros

Ruth Yong (Treasurer)

Laila Miller

Tash Tourabaly

Mahesh Advani

Anmol Singh

Des Reuben (Principal)

Agenda



- Confirmation of 2023 AGM minutes
- 2023 Annual Report
- 2023 Principal's Report
- 2023 Board Report
- 2023 Treasurer's report
- Auditor appointment
- Election of Board Directors
- General Business



The Montessori School
KINGSLEY



- Confirmation 2023 AGM minutes
- 2023 Annual Report



The Montessori School
KINGSLEY



Principal's Report

Presented by Des Reuben



The Montessori School
KINGSLEY



Board Report

Presented by Angela Chew

Strategic Planning Day 2023 – Board Directors & Leadership Team



VISION

To lead the way as an exemplar of pure Montessori education whilst inspiring the application of Montessori methods in modern society.

MISSION

To provide Montessori education in an environment that inspires curiosity and a love of learning, improving life on our planet by respecting and nurturing the holistic potential of every child.



Education

Provide Montessori education, nurturing purposeful self-directed learning, the development of independence and a sense of community, complemented by Enrichment/Recall/Retention programmes for students up to 16 years.

Prepared Environment

Create and maintain pure Montessori environments that are safe and engaging spaces for students to reach their full potential.

Staff

Attract, train and support Montessori professionals, dedicated and skilled, who are safe and engaging spaces for students to reach their full potential.

Governance

Set, guide and monitor the strategic priorities of the school to ensure a positive, safe and ethical environment for students to reach their full potential.

Finance

Manage the school's income and funds to ensure the school's sustainability and growth.

Engagement

Foster positive relationships and collaboration within the school and the wider community.

Natural Environment

Conserve and manage the school's husband and surroundings for the benefit of the community.

Strategic Planning 2024 - 2029

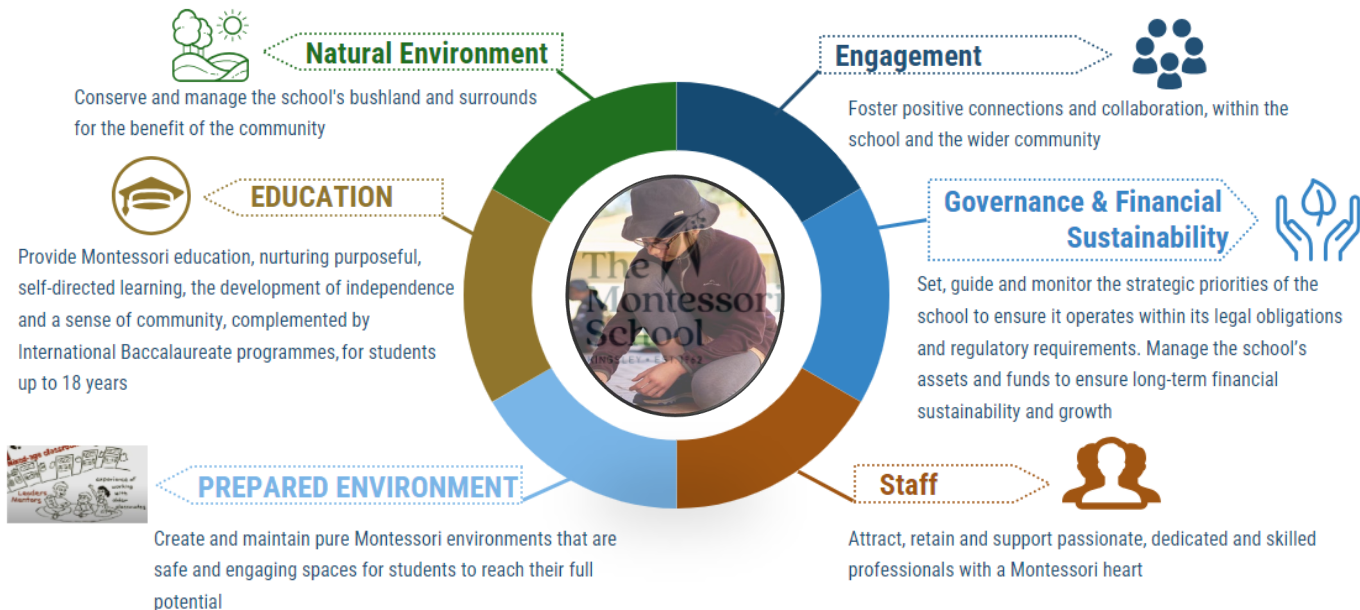


The Montessori School

KINGSLEY

“One test of the correctness of educational procedure is the happiness of the child.”

STRATEGY PLAN 2024 - 2029



HIGH-LEVEL INITIATIVES

- Provide a superior Montessori education while integrating International Baccalaureate (IB) programs to foster holistic development.
- Build a strong sense of community among students, staff, families, and the wider community, emphasizing positive connections and collaboration.
- Manage the school's assets and funds to ensure long-term financial sustainability and growth.

MISSION

To provide Montessori education in an environment that inspires curiosity and a love of learning, improving life on our planet by respecting and nurturing the holistic potential of every child

VISION

To lead the way as an exemplar of pure Montessori education whilst inspiring the application of Montessori methods in modern society

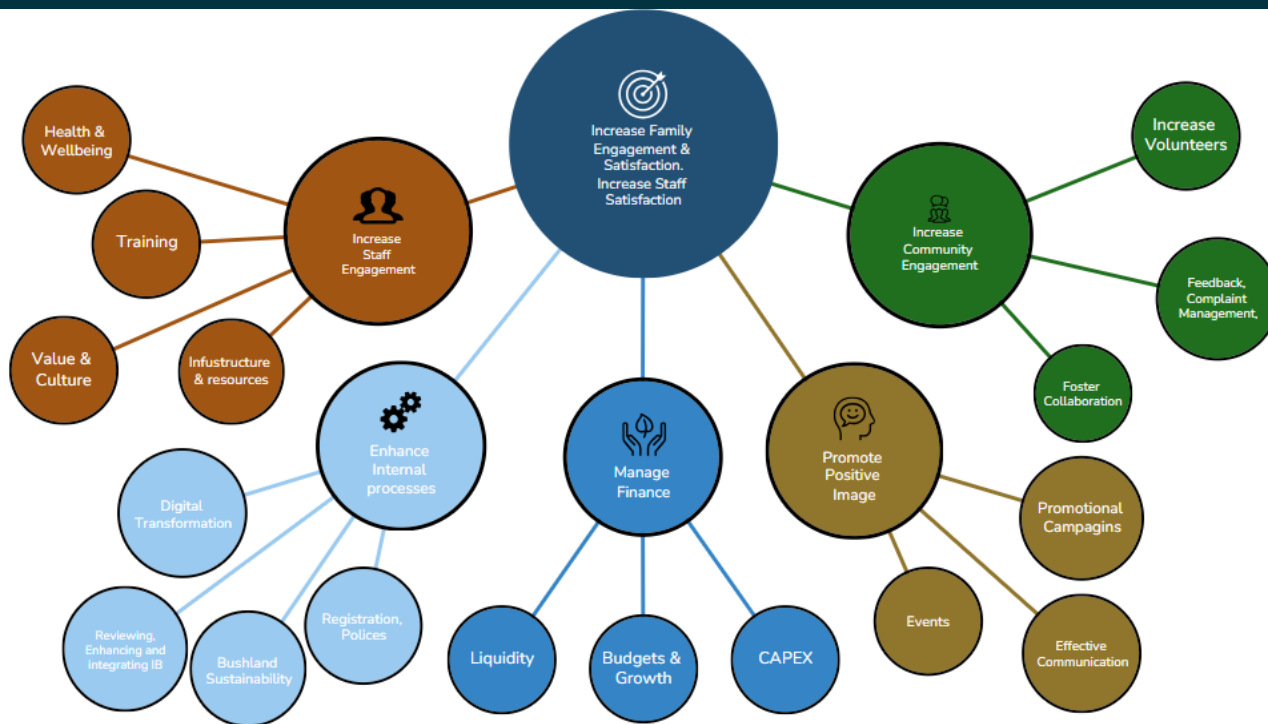


Brain Dump from Planning Day





Draft Strategy Map Brainstorming





Draft Focus Areas & Initiatives

Leadership development
Increase innovation
Collaboration with other Montessori schools
Increase Community engagement/connection
Maintain/increase Teacher Development – intake/retention
Career progression
Using tech for education with students
Student exchange
Advocate/Lobby for Montessori Education
Home school opportunities
Curriculum review
Develop system of tracking student progress in a Montessori way
Compromises to meet legal/registration requirements
Leveraging Transparent classroom & Instant Bac
Wider community

VR/AI
IB program
Materials refresh
LS to IB retention
Education delivery



NEXT STEPS

Strategy Timeline Roadmap

The strategy timeline roadmap helps in aligning stakeholders, setting expectations, and providing a clear direction for the completion of Strategy map, Strategic Items & KPI's, Strategic Initiative for each Strategic Item and roll out timelines.





The Montessori School
KINGSLEY



Bushland Sub-Committee

Convened by Laila Miller

Members:

- Ruth Bradley
- Peter Cardy
- Joyce Chela

Thanks to all the students & volunteers
from our School Community

Conservation, Education, Community



Bushland Highlights 2023

- Grants and Donations:
 - State Natural Resources Management Program
 - City of Joondalup
 - Wildflower Society of WA
- Seedling Planting - LP students
- Weed Control – UP students, Contractor
- Annual Bushwalk
- Busy Bee
- Vegetation Condition Survey



2023 Vegetation Condition Survey

Vegetation Condition 2023 vs 2017

- Areas of 'very good' and 'good' condition increased by nearly 600 m² each. Taken together, this is an increase from 51% to 62% of the 2017 survey area.
- An overall decrease of 281 m² in the area of 'degraded' vegetation. This is notable, as the 2023 survey area was 1,275 m² larger than in 2017.
- The Bushland sub-committee will implement recommendations from the 2023 survey to further improve bushland health.

"This is a fantastic result for a small bushland remnant and the school should be commended for its commitment to preserving it."



The Montessori School
KINGSLEY



Capital Planning Sub-Committee

Established to investigate & develop short, medium & long-term plans for the future capital needs of the School

Convened by Warren Miller

Members:

- Mahesh Advani
- Aleks Henderson
- Queenie Massie
- Des Reuben
- Olivier Royet



The Montessori School
KINGSLEY



Capital Planning Sub-Committee

Upper Secondary Building Facilities

- Science laboratory
- Flexible classrooms
- Library
- Student common room
- Kitchen facilities
- Staff room
- Additional toilets
- Outdoor auditorium space



Capital Planning Sub-Committee

Key Notes

- Construction completion Nov 2024
- Oval size unchanged
- Replanting of trees by TMSK
- Project value ~\$3.8M (ex GST)
- Government grant \$900k



The Montessori School
KINGSLEY



Capital Planning Sub-Committee

Upcoming works

- Replace fencing at school entrance
- Replace limestone wall near PP2
- Enclose veranda for UP and LS buildings
- Glass partition in Lower Secondary
- Shade sails for the hardcourt



The Montessori School
KINGSLEY



Risk & Compliance Sub-Committee

Convened by Celine Royet (till June 2023)
and Jarrod Burns (July 2023 onwards)

Members:

- Jarrod Burns
- Tash Tourabaly

To support the School in achieving compliance obligations mandated by legislation, regulatory bodies and recommended codes of practice – providing advice on the pragmatic management of risk



Risk & Compliance Highlights

- Policy review and refinement support
- Internal advisory support and briefings
- Framework development:
 - Incident & Breach Management
 - Business Continuity Management



The Montessori School
KINGSLEY



Finance Sub-Committee

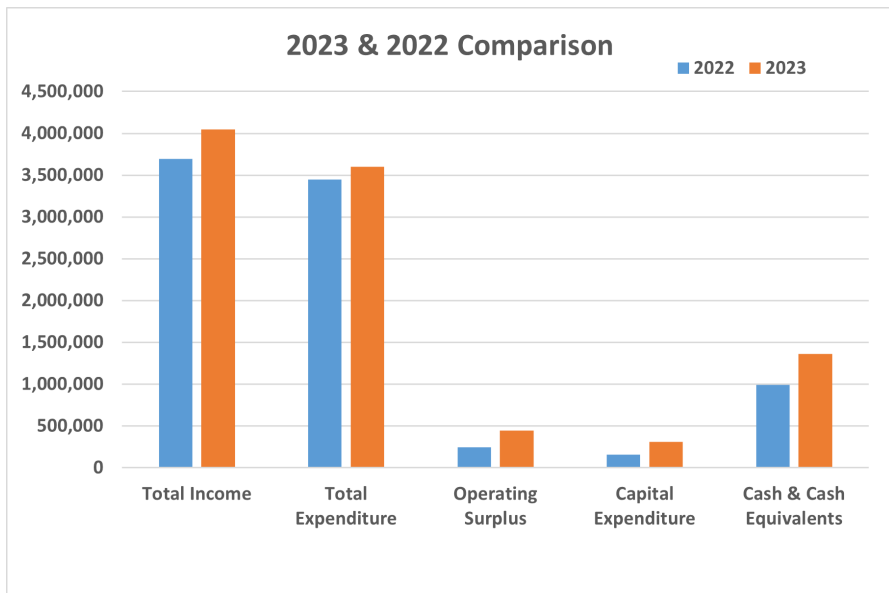
Convened by Ruth Yong (Treasurer)

Members:

- Hannah Zhang
- Yulia Wood
- Queenie Massie
- Des Reuben

Strategic oversight of School budget & financial activities to support communication & recommendations to Board & community

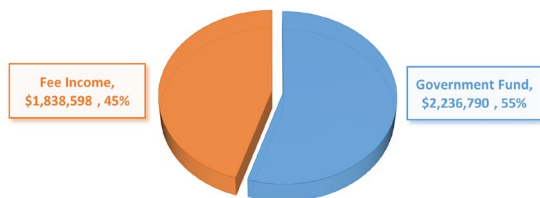
Treasurer's Report - 2023 Highlights



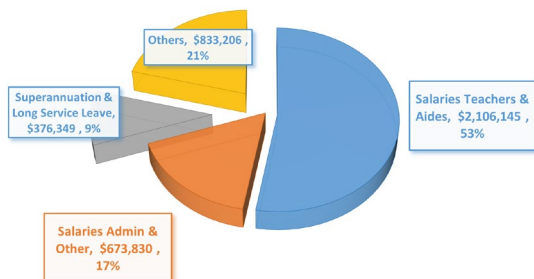
- Total income continued to increase (10%)
- Total expenditure only increased slightly (4%)
- Operating surplus increased 81% to \$447,742
- \$309,328 capital expenditure
- 38% increase in cash and cash equivalents
- Upper Secondary Building Project quote within budget, funding with \$900,000 grant and Low Interest Loan from Department of Education
- Surplus reserves in Term Deposits to earn higher interest

Treasurer's Report - 2023 Budget Highlights

2024 INCOME



2024 EXPENDITURE



	2024 Budget	2023 Actual	Change
Enrolment Number	199 (Feb census) + 8	198 (Ave)	5% ↑
Government Fund	\$2,236,790	\$ 2,250,175	6% ↓
Fee Income	\$1,838,598	\$ 1,774,027	4% ↑
Capital Expenditure (including new US Building)	\$3,933,825	\$309,328	↑
Total Operating Expenditure	\$3,989,530	\$3,598,321	11% ↑



2023 Appointment of Auditor

Nominee:
ANDERSON MUNRO & WYLLIE
Registered Company Auditor

Director Election

- Chloe Bond
- Alex Zavros





The Montessori School
KINGSLEY



General Business

**2024
Annual General Meeting**



The Montessori School
KINGSLEY



Thank you

**2024 Annual General Meeting
Closed**